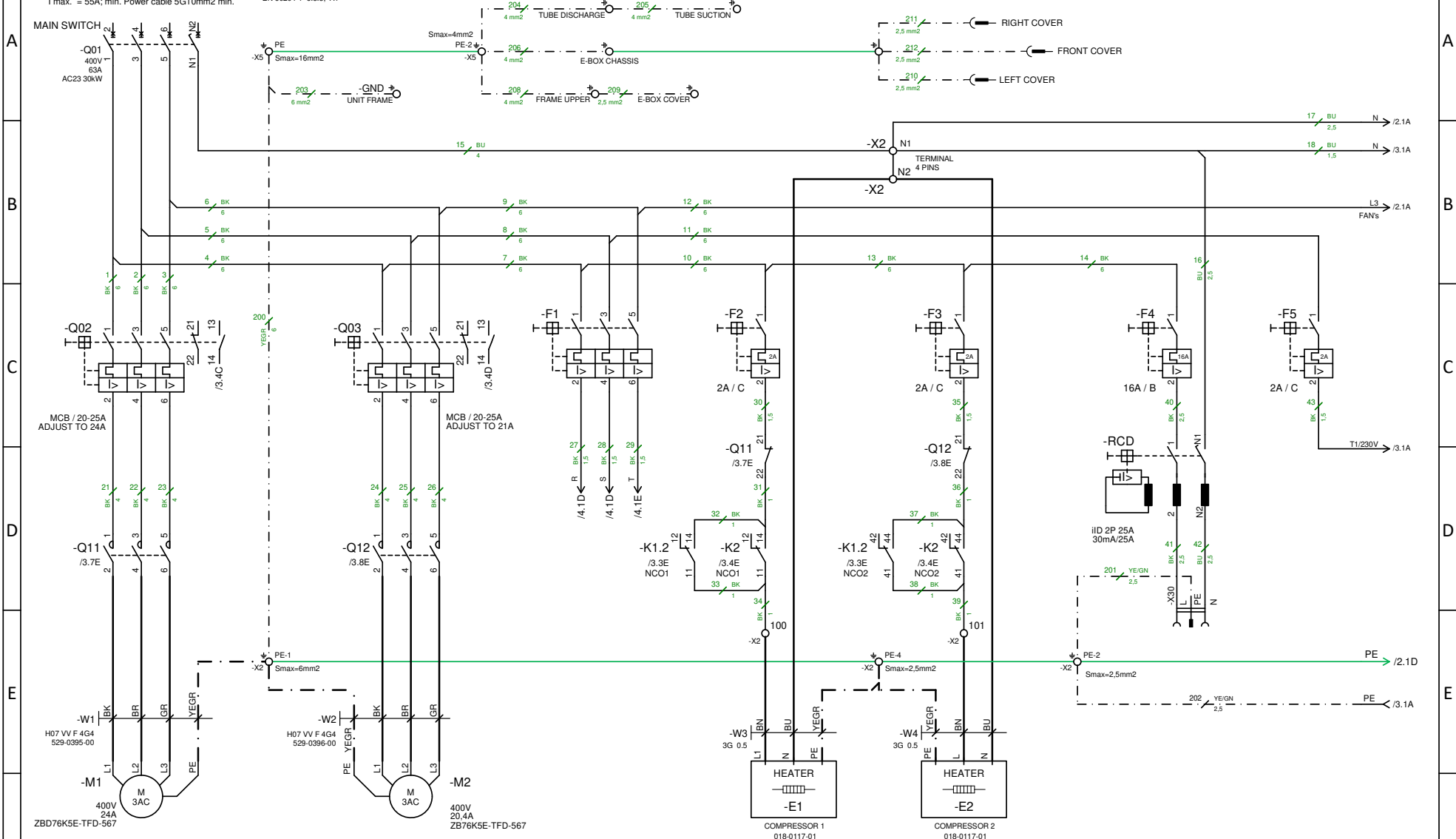


POWER SUPPLY 3x400/230V; N; PE; 50Hz

FOR CORRECT FUNCTION OF PROTECTION AGAINST INDIRECT CONTACT BY AUTOMATIC DISCONNECTION OF SUPPLY MAX. VALUE OF EARTH FAULT LOOP IMPEDANCE MUST BE:
 $Z_s \leq 0.5 \Omega$ (0.02 25A/D; Max. $Z_s = 0.56 \Omega$ for $t = 0.4s$)
 EN 60204-1 6.3.3; A1

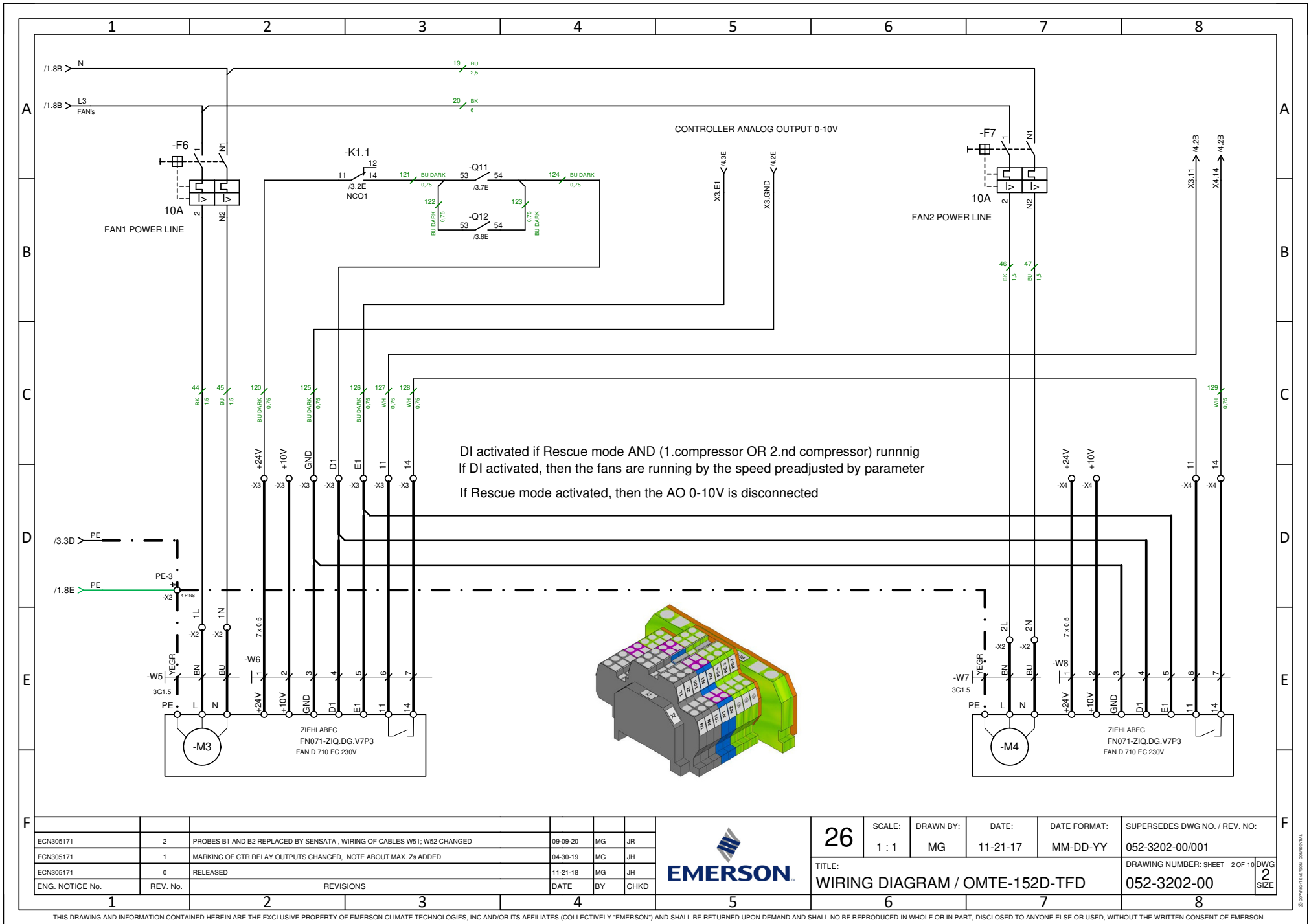
$I_{max} = 55A$; min. Power cable 5G10mm2 min.



ECN	REV. No.	REVISIONS	DATE	BY	CHKD
ECN305171	2	PROBES B1 AND B2 REPLACED BY SENSATA , WIRING OF CABLES W51; W52 CHANGED	09-09-20	MG	JR
ECN305171	1	MARKING OF CTR RELAY OUTPUTS CHANGED. NOTE ABOUT MAX. Z_s ADDED	04-30-19	MG	JH
ECN305171	0	RELEASED	11-21-18	MG	JH



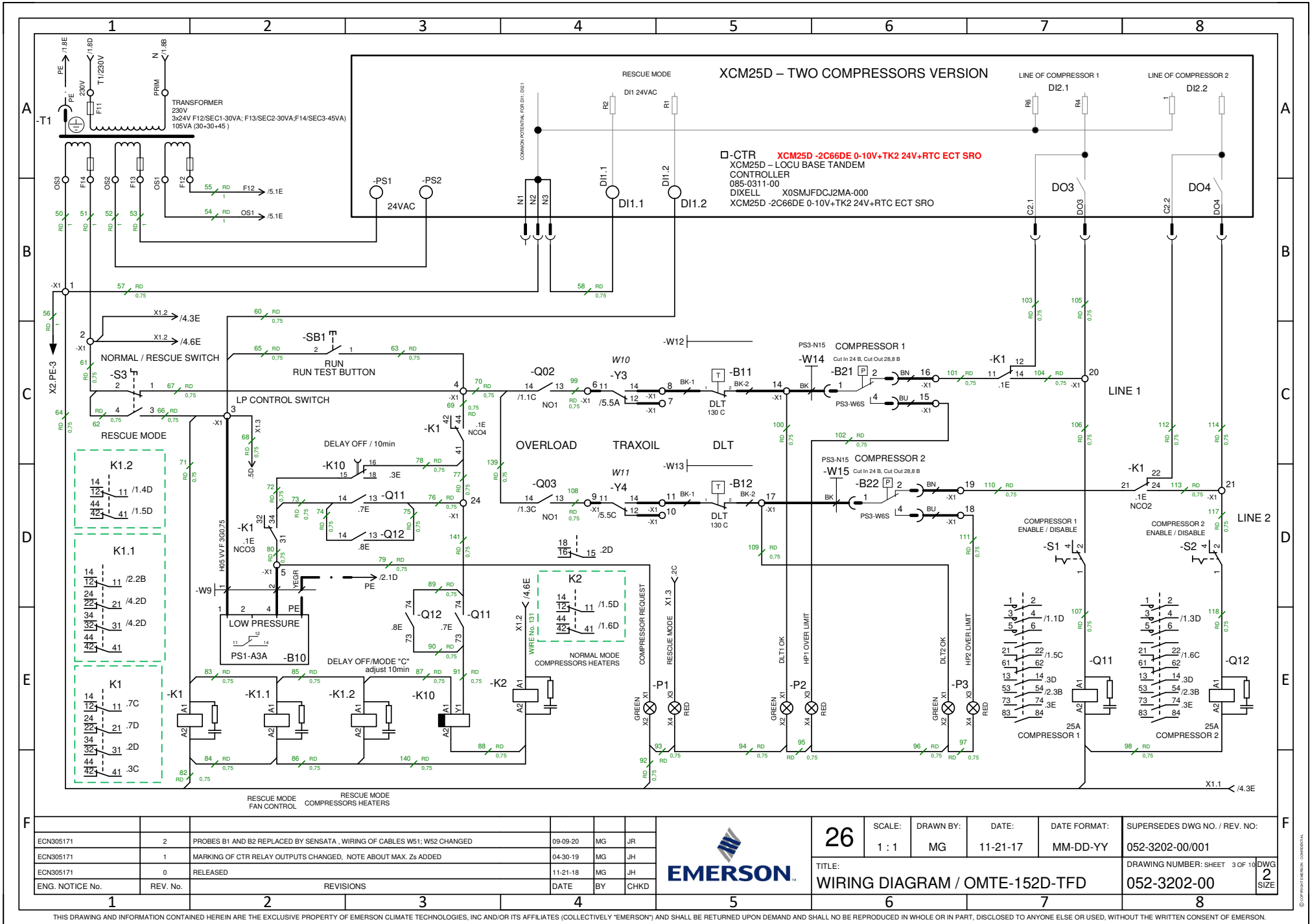
26	SCALE:	DRAWN BY:	DATE:	DATE FORMAT:	SUPERSEDES DWG NO. / REV. NO.:
	1 : 1	MG	11-21-17	MM-DD-YY	052-3202-00/001
TITLE:					DRAWING NUMBER: SHEET 1 OF 10 DWG SIZE
WIRING DIAGRAM / OMTE-152D-TFD					052-3202-00 2

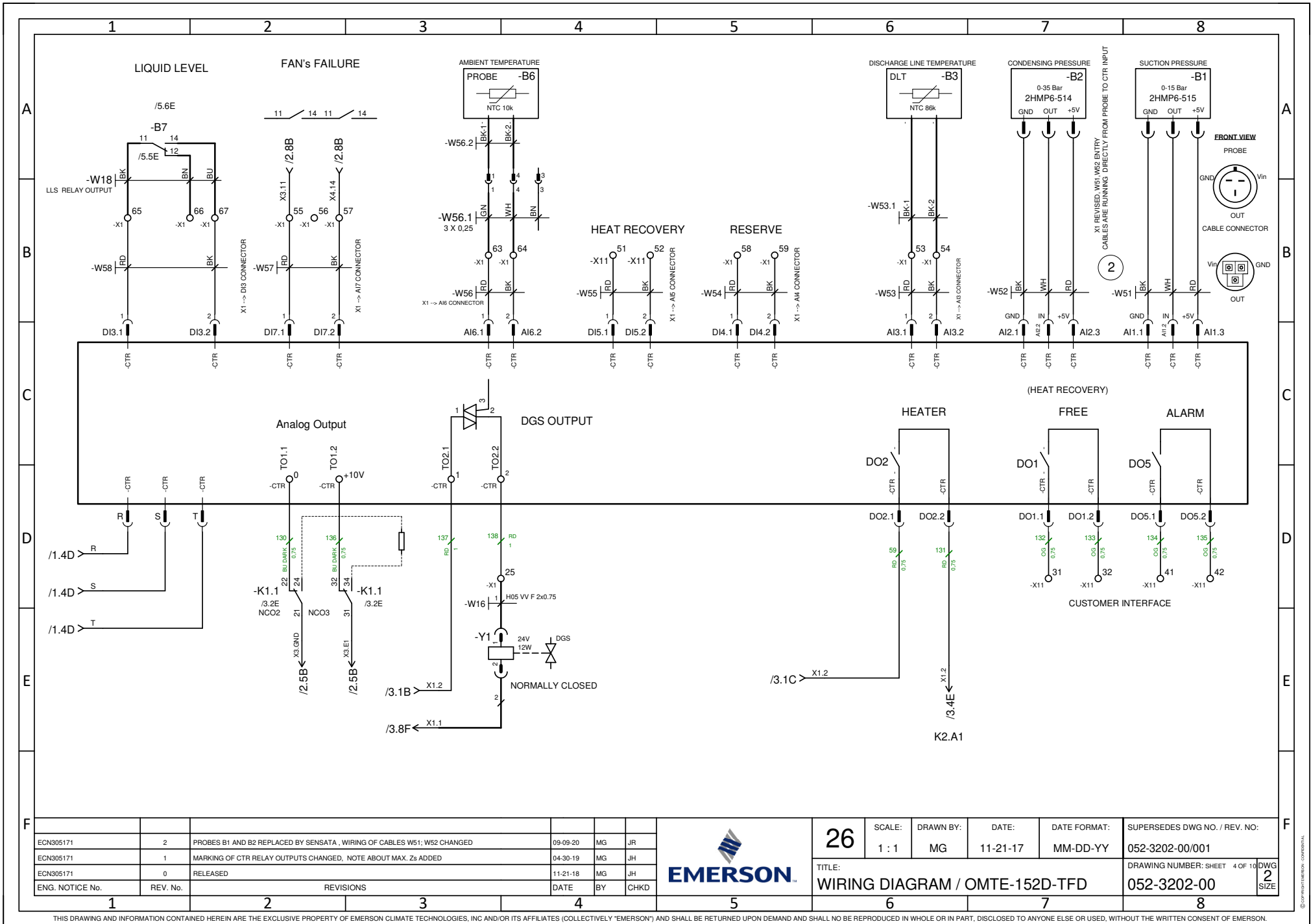


ECN305171	2	PROBES B1 AND B2 REPLACED BY SENSATA , WIRING OF CABLES W51; W52 CHANGED	09-09-20	MG	JR
ECN305171	1	MARKING OF CTR RELAY OUTPUTS CHANGED. NOTE ABOUT MAX. Zs ADDED	04-30-19	MG	JH
ECN305171	0	RELEASED	11-21-18	MG	JH
ENG. NOTICE No.	REV. No.	REVISIONS	DATE	BY	CHKD

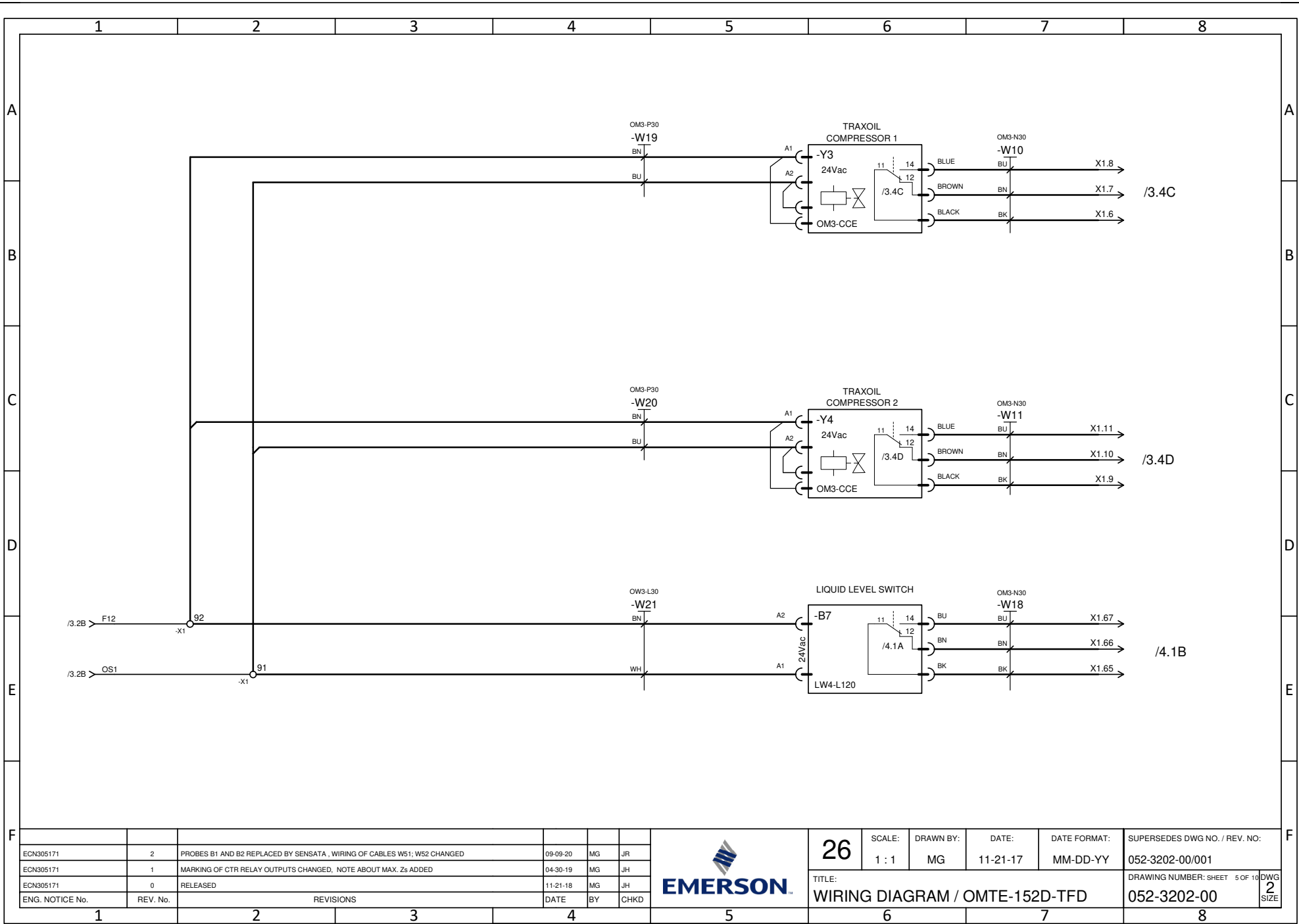


26	SCALE: 1 : 1	DRAWN BY: MG	DATE: 11-21-17	DATE FORMAT: MM-DD-YY	SUPERSEDES DWG NO. / REV. NO: 052-3202-00/001
TITLE: WIRING DIAGRAM / OMTE-152D-TFD					DRAWING NUMBER: SHEET 2 OF 10 DWG SIZE 2

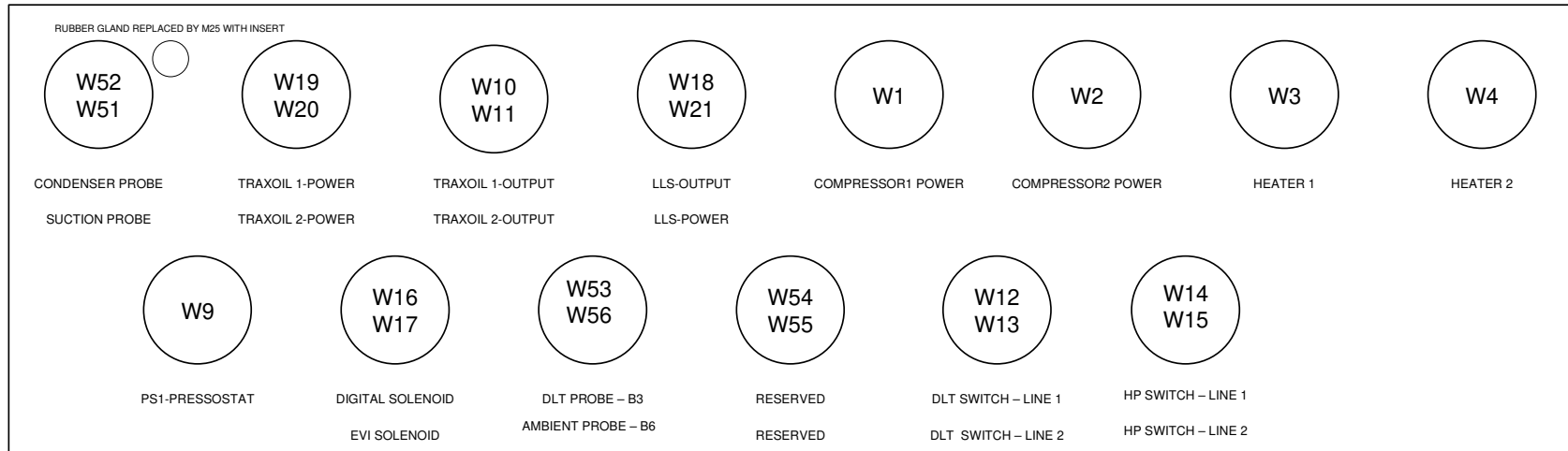




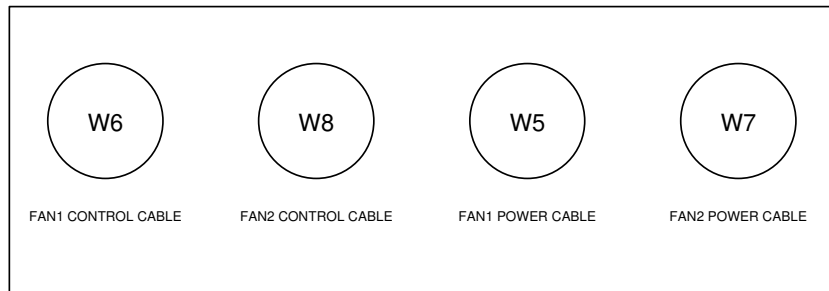
ECN305171	2	PROBES B1 AND B2 REPLACED BY SENSATA, WIRING OF CABLES W51; W52 CHANGED	09-09-20	MG	JR		26 SCALE: 1:1 DRAWN BY: MG DATE: 11-21-17 DATE FORMAT: MM-DD-YY SUPERSEDES DWG NO. / REV. NO.: 052-3202-00/001	
ECN305171	1	MARKING OF CTR RELAY OUTPUTS CHANGED, NOTE ABOUT MAX. Zs ADDED	04-30-19	MG	JH			TITLE: WIRING DIAGRAM / OMTE-152D-TFD DRAWING NUMBER: SHEET 4 OF 10 DWG SIZE 2
ECN305171	0	RELEASED	11-21-18	MG	JH			
ENG. NOTICE No.	REV. No.	REVISIONS	DATE	BY	CHKD			



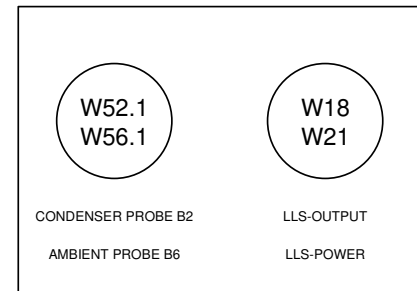
CABLE ENTRIES ARRANGEMENT E-BOX BOTTOM



FANS CABLE ENTRIES ARRANGEMENT E-BOX LEFT UPPER CORNER




CABLE ENTRIES ARRANGEMENT COMPRESSOR COMPARTMENT BOTTOM LEFT



ECN305171	2	PROBES B1 AND B2 REPLACED BY SENSATA , WIRING OF CABLES W51; W52 CHANGED	09-09-20	MG	JR		26	SCALE:	DRAWN BY:	DATE:	DATE FORMAT:	SUPERSEDES DWG NO. / REV. NO.:
ECN305171	1	MARKING OF CTR RELAY OUTPUTS CHANGED. NOTE ABOUT MAX. Zs ADDED	04-30-19	MG	JH			1 : 1	MG	11-21-17	MM-DD-YY	052-3202-00/001
ECN305171	0	RELEASED	11-21-18	MG	JH			TITLE:		DRAWING NUMBER: SHEET 6 OF 10 DWG SIZE		2
ENG. NOTICE No.	REV. No.	REVISIONS	DATE	BY	CHKD	WIRING DIAGRAM / OMTE-152D-TFD		052-3202-00				


Row	Designation	Comment	Type Designation	PART NUMBER	Length	Remarks
1	-W1	COMPRESSOR1 POWER	H07 VV F 4G4	529-0395-00	160 cm	
2	-W2	COMPRESSOR2 POWER	H07 VV F 4G4	529-0396-00	179 cm	
3	-W3	HEATER 1	3G 0.5	529-0397-00	124 cm	CABLE IS PART OF THE HEATER
4	-W4	HEATER 2	3G 0.5	529-0398-00	124 cm	CABLE IS PART OF THE HEATER
5	-W5	FAN1 POWER	3G1.5	529-0399-00	121 cm	
6	-W6	FAN1 CONTROL CABLE	7 x 0,5	529-0400-00	122 cm	
7	-W7	FAN2 POWER	3G1.5	529-0401-00	220 cm	
8	-W8	FAN CONTROL CABLE	7 x 0,5	529-0402-00	218 cm	
9	-W9	CONTROL CABLE PRESSOSTAT	H05 VV F 3G0,75	529-0403-00	131 cm	
10	-W10	TRAXOIL1 RELAY OUTPUT	OM3-N30	529-0404-00	201 cm	
11	-W11	TRAXOIL2 RELAY OUTPUT	OM3-N30	529-0405-00	248 cm	
12	-W12	DLT THERMOCONTACT 1		529-0406-00	88 cm	WIRES ARE PART OF THE SWITCH
13	-W13	DLT THERMOCONTACT 2		529-0407-00	88 cm	WIRES ARE PART OF THE SWITCH
14	-W14	HP SWITCH LINE1	PS3-N15	529-0408-00	113 cm	SPDT / NCO
15	-W15	HP SWITCH LINE 2	PS3-N15	529-0409-00	126 cm	SPDT / NCO
16	-W16	DGS VALVE	H05 VV F 2x0.75	529-0410-00	220 cm	
17	-W18	LLS RELAY OUTPUT	OM3-N30	529-0412-00	218 cm	
18	-W19	TRAXOIL 1 POWER	OM3-P30	529-0413-00	203 cm	
19	-W20	TRAXOIL 2 POWER	OM3-P30	529-0414-00	268 cm	
20	-W21	LIQUID LEVEL MONITORING POWER	OW3-L30	529-0415-00	217 cm	
21	-W51	SENSATA PROBE CABLE	RD,BK,WH; XLPE	529-0555-01	290 cm	
22	-W52	SENSATA PROBE CABLE	RD,BK,WH; XLPE	529-0556-01	400 cm	
23	-W53	DLT PROBE	X1 --> AI3 CONNECTOR	529-0422-00	40 cm	INTERNAL WIRING: CTR INPUT AI3 -->X1
24	-W53.1	CC B3 DLT	NTC 86k / 043-0200-01	529-0423-00	90 cm	PROBE 3 --> X1
25	-W54	DI4	X1 --> AI4 CONNECTOR	529-0424-00	40 cm	INTERNAL WIRING: CTR INPUT AI4 -->X1
26	-W55	DI5	X1 --> AI5 CONNECTOR	529-0425-00	50 cm	INTERNAL WIRING: CTR INPUT AI5 -->X1
27	-W56	AI6	X1 --> AI6 CONNECTOR	529-0426-00	40 cm	INTERNAL WIRING: CTR INPUT AI6 -->X1
28	-W56.1	AMBIENT PROBE B6 - 2	UNITRONIC LIYY 3x0.25	529-0427-00	182 cm	X1-->CONNECTOR X56-FEMALE
29	-W56.2	AMBIENT PROBE B6 - 3	B6 / 043-0198-00 -->X56.2 MALE	529-0428-00	20 cm	PROBE B6 --> CONNECTOR X56 MALE
30	-W57	DI7	X1 --> AI7 CONNECTOR	529-0429-00	40 cm	INTERNAL WIRING: CTR INPUT AI7 -->X1
31	-W58	DI3	X1 --> DI3 CONNECTOR	529-0430-00	40 cm	INTERNAL WIRING: CTR INPUT DI3 -->X1

ECN305171	2	PROBES B1 AND B2 REPLACED BY SENSATA , WIRING OF CABLES W51; W52 CHANGED	09-09-20	MG	JR		26	SCALE:	DRAWN BY:	DATE:	DATE FORMAT:	SUPERSEDES DWG NO. / REV. NO.:
ECN305171	1	MARKING OF CTR RELAY OUTPUTS CHANGED. NOTE ABOUT MAX. Zs ADDED	04-30-19	MG	JH			1: 1	MG	11-21-17	MM-DD-YY	052-3202-00/001
ECN305171	0	RELEASED	11-21-18	MG	JH			TITLE: WIRING DIAGRAM / OMTE-152D-TFD				
ENG. NOTICE No.	REV. No.	REVISIONS	DATE	BY	CHKD						DRAWING NUMBER: SHEET 7 OF 10 DWG SIZE 2	

1 2 3 4 5 6 7 8

LEGEND

ITEM	SYMB...	PART	PART DESCRIPTION	SUPPLIER	SUPPLIER CODE	PART NUMBER	Remarks
1	-B1	PRESSURE TRANSDUCER-RATIOMETRIC	0-15 Bar	SENSATA	2HMP6-515	085-0329-00	
2	-B2	PRESSURE TRANSDUCER-RATIOMETRIC	0-35 Bar	SENSATA	2HMP6-514	085-0330-00	
3	-B3	THERMISTOR	DISCHARGE TEMPERATURE	DIXELL	#	043-0200-01	
4	-B6	THERMISTOR	AMBIENT TEMPERATURE	DIXELL	#	043-0198-00	
5	-B7	MONITORING DEVICE	LIQUID LEVEL	ALCO	#805490	085-0300-00	
6	-B10	PRESSURE SWITCH	LP CONTROL SWITCH	ALCO	# 4370700	085-7049-00	ADJUSTABLE - FOR RESCUE ...
7	-B11	THERMOCONTACT	DISCHARGE LINE -1	EMERSON		085-0227-00	
8	-B12	THERMOCONTACT	DISCHARGE LINE -1	EMERSON		085-0227-00	
9	-B21	PRESSURE SWITCH	HIGH PRESSURE LIMIT	ALCO	#715696	039-0029-00	
10	-B22	PRESSURE SWITCH	HIGH PRESSURE - LIMIT	ALCO	#715696	039-0029-00	
11	-CTR	CONTROLLER	XCM25D - LOCU BASE TANDEM	DIXELL	XCM25D -2C66D...	085-0311-00	XCM25D -2C66DE 0-10V+TK2 ...
12	-E1	HEATER	COMPRESSOR 1 CRANKCASE	ECT	018-0117-01	018-0117-01	
13	-E2	HEATER	COMPRESSOR 2 CRANKCASE	ECT	018-0117-01	018-0117-01	
14	-F1	CIRCUIT BREAKER	RST CTR INPUTS - 2A / B	SCHNEIDER ELE...	A9F73302	043-0263-00	
15	-F2	CIRCUIT BREAKER	HEATER 1 - 2A / C	SCHNEIDER ELE...	A9F84102	043-0208-00	
16	-F3	CIRCUIT BREAKER	HEATER 2 - 2A / C	SCHNEIDER ELE...	A9F84102	043-0208-00	
17	-F4	CIRCUIT BREAKER	SOCKET 230V - 16A / B	SCHNEIDER ELE...	A9F83116	043-0228-00	FOR SERVICE
18	-F5	CIRCUIT BREAKER	CONTROL TRANSFORMER - 2A / C	SCHNEIDER ELE...	A9F84102	043-0208-00	
19	-F6	CIRCUIT BREAKER	POWER LINE FAN1 - 1P+N 10A / C	SCHNEIDER ELE...	A9F84610	043-0218-00	
20	-F7	CIRCUIT BREAKER	POWER LINE FAN2 - 1P+N 10A / C	SCHNEIDER ELE...	A9F84610	043-0218-00	
21	-K1	RELAY	RESCUE MODE	SCHNEIDER ELE...	RXM4AB2B7	040-0212-00	
22	-K1.1	RELAY	RESCUE MODE	SCHNEIDER ELE...	RXM4AB2B7	040-0212-00	
23	-K1.2	RELAY	24Vac; 2 NCO; with LED	SCHNEIDER ELE...	RXM2AB2B7	040-0211-00	
24	-K2	RELAY	HEATERS NORMAL MODE	SCHNEIDER ELE...	RXM2AB2B7	040-0211-00	
25	-K10	RELAY	TIME OFF (10min.)	SCHNEIDER ELE...	RE17RMMU	040-0199-00	
26	-M1	MOTOR	COMPRESSOR	ECT	ZBD76K5E-TFD-...	497-0911-04	DIGITAL compressor
27	-M2	MOTOR	COMPRESSOR	ECT	ZB76K5E-TFD-567	497-0911-01	ON / OFF compressor
28	-M3	MOTOR	EC FAN	ZIEHLABEG	FN071-ZIQ.DG.V...	550-0699-00	FAN 1
29	-M4	MOTOR	EC FAN	ZIEHLABEG	FN071-ZIQ.DG.V...	550-0699-00	FAN 2
30	-P1	SIGNAL LAMP	RED =RESCUE MODE;	SCHNEIDER ELE...	A9E18335	039-0052-00	
31	-P2	SIGNAL LAMP	GREEN = B11 CLOSED;	SCHNEIDER ELE...	A9E18335	039-0052-00	
32	-P3	SIGNAL LAMP	GREEN = B12 CLOSED;	SCHNEIDER ELE...	A9E18335	039-0052-00	

ECN305171	2	PROBES B1 AND B2 REPLACED BY SENSATA , WIRING OF CABLES W51; W52 CHANGED	09-09-20	MG	JR		26	SCALE:	DRAWN BY:	DATE:	DATE FORMAT:	SUPERSEDES DWG NO. / REV. NO.:
ECN305171	1	MARKING OF CTR RELAY OUTPUTS CHANGED. NOTE ABOUT MAX. Zs ADDED	04-30-19	MG	JH			1: 1	MG	11-21-17	MM-DD-YY	052-3202-00/001
ECN305171	0	RELEASED	11-21-18	MG	JH			TITLE:		DRAWING NUMBER: SHEET 9 OF 10 DWG SIZE		052-3202-00
ENG. NOTICE No.	REV. No.	REVISIONS	DATE	BY	CHKD	WIRING DIAGRAM / OMTE-152D-TFD						

1

2

3

4

5

6

7

8

LEGEND

ITEM	SYMB...	PART	PART DESCRIPTION	SUPPLIER	SUPPLIER CODE	PART NUMBER	Remarks
33	-Q01	MAIN SWITCH	INTERPACT / INS63 - 4P	SCHNEIDER ELE...	28919	543-0288-00	With extended laterar rotary ha...
34	-Q02	MOTOR CIRCUIT BREAKER	20-25A	SCHNEIDER ELE...	GV2 ME22	071-0727-00-	
35	-Q03	MOTOR CIRCUIT BREAKER	20-25A	SCHNEIDER ELE...	GV2 ME22	071-0727-00-	
36	-Q11	CONTACTOR	LC1 D25B7	SCHNEIDER ELE...	LC1 D25B7	012-0259-00	
37	-Q12	CONTACTOR	LC1 D25B7	SCHNEIDER ELE...	LC1 D25B7	012-0259-00	
38	-RCD	RCD	SERVICE SOCKET PROTECTION	SCHNEIDER ELE...	A9Z11225	043-0241-00	
39	-S1	TOGGLE SWITCH	DISABLING OF 1. COMPRESSOR	SCHNEIDER ELE...	A9E18070	043-0204-00	
40	-S2	TOGGLE SWITCH	DISABLING OF 2. COMPRESSOR	SCHNEIDER ELE...	A9E18070	043-0204-00	
41	-S3	ROTARY SWITCH	NORMAL / RESCUE MODE SWITC...	SCHNEIDER ELE...	A9E15122	043-0262-00	
42	-SB1	PUSH BUTTON	TEST BUTTON - COMPRESSOR RUN	SCHNEIDER ELE...	A9E18032	043-0205-00	
43	-T1	TRANSFORMER	CONTROL CIRCUITS	ELEKTROKOV Z...	JOC E2838-0095	037-0044-00	
44	-X1	TERMINAL BLOCK	CONTROL CIRCUITS	SONEPAR / WAGO	080-0169-01/001	080-0169-01/001	REVISED
45	-X2	TERMINAL BLOCK	FAN's POWER	SONEPAR / WAGO	080-0169-02	080-0169-02	
46	-X3	TERMINAL BLOCK	FAN's CONTROL CIRCUIT	SONEPAR / WAGO	080-0169-03	080-0169-03	
47	-X4	TERMINAL BLOCK	FAN's CONTROL CIRCUIT	SONEPAR / WAGO	080-0169-04	080-0169-04	
48	-X5	TERMINAL BLOCK	PE	SONEPAR / WAGO	080-0169-05	080-0169-05	
49	-X11	TERMINAL BLOCK	CUSTOMER INTERFACE	SONEPAR / WAGO	080-0169-11	080-0169-11	
50	-X30	SERVICE SOCKET	230V/16ASCHUKO PE CONTACTS	SCHNEIDER ELE...	A9A15310	080-0160-00	
51	-Y1	SOLENOID VALVE	USED FOR DIGITAL VALVE	ECT FLOW CONT...	*	023-0104-00	
52	-Y3	SOLENOID VALVE	OIL MONITORING DEVICE	ALCO	#805029	510-0782-00	
53	-Y4	SOLENOID VALVE	OIL MONITORING DEVICE	ALCO	#805029	510-0782-00	

ECN	REV. No.	REVISIONS	DATE	BY	CHKD
ECN305171	2	PROBES B1 AND B2 REPLACED BY SENSATA , WIRING OF CABLES W51; W52 CHANGED	09-09-20	MG	JR
ECN305171	1	MARKING OF CTR RELAY OUTPUTS CHANGED. NOTE ABOUT MAX. Zs ADDED	04-30-19	MG	JH
ECN305171	0	RELEASED	11-21-18	MG	JH



26

SCALE: 1:1	DRAWN BY: MG	DATE: 11-21-17	DATE FORMAT: MM-DD-YY	SUPERSEDES DWG NO. / REV. NO: 052-3202-00/001
------------	--------------	----------------	-----------------------	---

TITLE: WIRING DIAGRAM / OMTE-152D-TFD

DRAWING NUMBER: SHEET 10 OF 10	DWG SIZE 2
--------------------------------	------------

1

2

3

4

5

6

7

8